



TheraSculpt

RED LIGHT
BEAUTY DEVICE

BEST PRACTICES

Sculpt Your Skin. Elevate Your Confidence.



Table of Contents

Thank you and Welcome!	1	FAQ & Tips	11
Congratulations	2	Warranty	12
What's In The Box	3	Contact	13
Setup Guide	4		
Controls	5		
Features	6		
Light Therapy Modes and Benefits	7		
Hints & Tips	8		
Precautions	9		
Specs	10		

Clean Manufacture

Our materials have been specially selected and tested to assure they are free of any toxins and 3rd-party tested to meet the highest international standards for bio-compatibility. T-Vibe holograms integration protect against eletro magnetic fields.

Special Materials

We have dedicated extensive time and care to sourcing premium materials to create the TheraSculpt. This innovative device combines advanced LED and microcurrent technology with a sleek, skin-safe design—delivering professional-grade skincare and sculpting results from the comfort of your home.

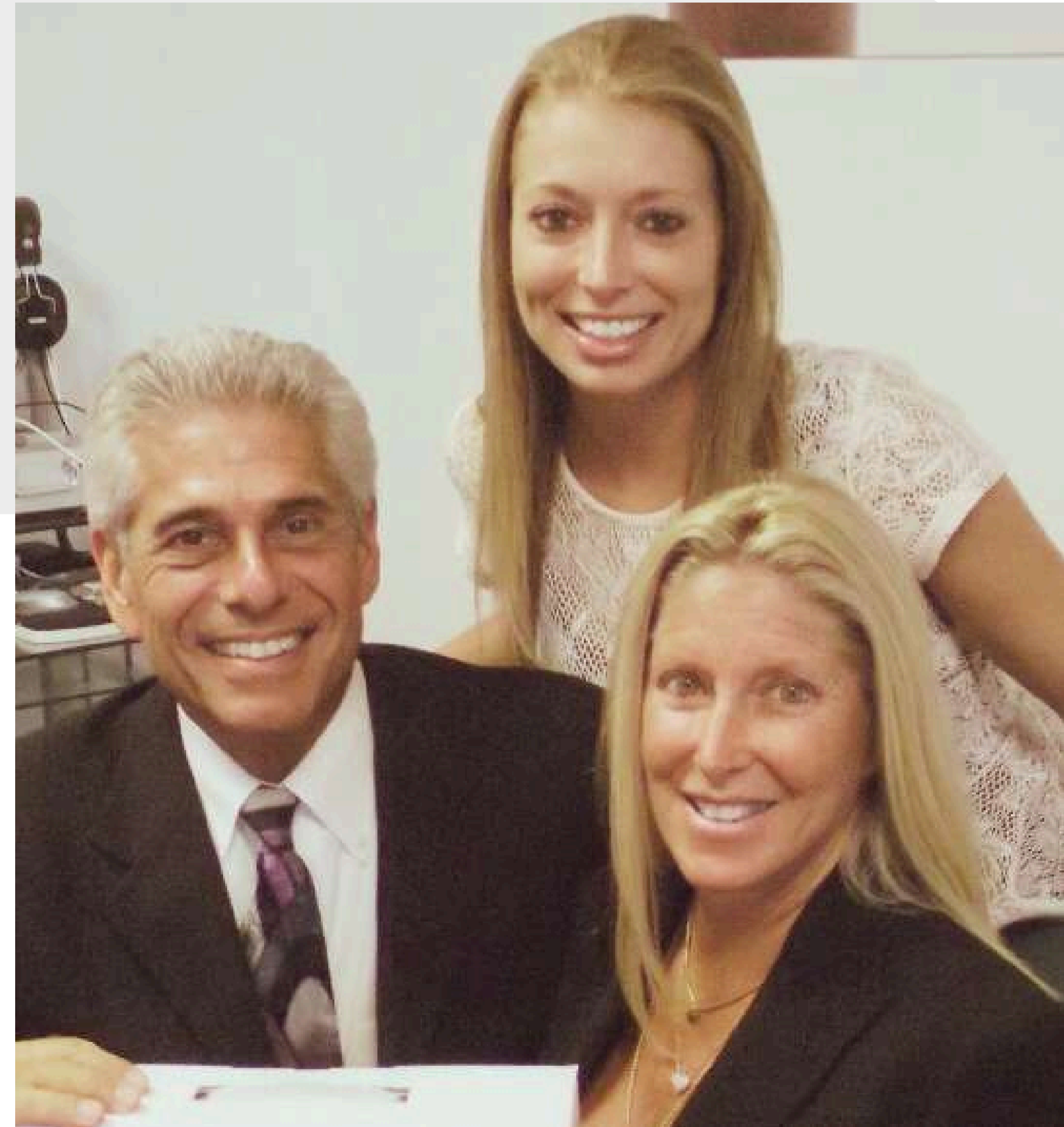


Thank you & Welcome!

● Whether this is your first Therasage product or the next addition to your health collection, thank you for choosing us in your journey to better health and well-being!

Therasage began from our personal journey to help our daughter manage, and eventually overcome her symptoms from Chronic Lyme Disease. With all of the challenges of our current healthcare approaches, it is our vision that each of us takes more responsibility for our health needs by incorporating a positive, natural, healthful daily regimen. We can make a positive statement toward better health using healing technology.

Therasage's mission is to deliver the best and the most advanced devices and applications in the natural personal health space. We hope that many of our FDA-listed rating, coupled with our commitment to corporate responsibility, integrity, and the environment makes us a worthy partner in your journey toward optimal health. Welcome!



TheraSculpt

RED LIGHT BEAUTY DEVICE

Congratulations on purchasing the TheraSculpt to elevate your health and well-being!

At Therasage, we are proud to be recognized as a global leader in cutting-edge wellness technologies. Our commitment to innovation drives us to create advanced solutions that enhance natural healing, improve daily living, and promote overall health.

The TheraSculpt is designed to transform your approach to skincare and facial rejuvenation. Combining 630nm red light, 465nm blue light, EMS microcurrent, soothing heat, and high-frequency vibration, it delivers targeted beauty and wellness benefits by improving circulation, promoting collagen production, reducing puffiness, and toning the skin.

Incorporating the TheraSculpt into your routine can help you experience firmer skin, a brighter complexion, and improved absorption of your favorite skincare products. Scientific research highlights the effectiveness of light therapy and microcurrent stimulation in supporting skin health, lifting facial contours, and enhancing overall radiance.

Make the TheraSculpt a key part of your wellness journey and enjoy the commitment to innovation and quality in every session.

“Since adding TheraSculpt to my routine, my skin feels tighter and more lifted after every session!”
– Rachel

“I’ve tried so many tools, but nothing compares to how radiant and refreshed my face looks after using TheraSculpt.”
– Mia

This reference guide is designed to help you get the most out of your TheraSculpt. Our approach supports a gentle and effective skincare routine, helping you build a healthy foundation for long-term radiance, tone, and rejuvenation.

****We are NOT offering medical advice**--these are merely guidelines.





TheraSculpt

Your package includes:

- 1 x TheraSculpt
- 1 x Type-C Charging Cable
- 1 x Charging Stand
- 1 x User Guide

Please check the contents to ensure everything is included. If any items are missing, contact our customer support team for assistance.

Step 1: Unpack your TheraSculpt and make sure all parts are accounted for. If you are missing a part, please email us at support@therasage.com or call us at 1-888-416-4441.

Step 2: Read These Pages:

- Precautions: MUST READ
- Hints and Tips: Important Before First Use

Step 3: Charge Your Device: Plug the included USB Type-C charging cable into a 5V power source. Insert the cable into the port at the bottom of the device.

- While charging, the battery indicator light will flash.
- When fully charged, the light will stay solid.
- A flashing battery icon (8x) indicates low power—please recharge promptly.

Step 4: Power On: Press and hold the power button for 3 seconds. The device will turn on and enter the default low-intensity mode.

Step 5: Apply Serum: Apply a serum, or essence, to clean skin to ensure smooth gliding and proper conduction.

Step 6: Begin Treatment: Gently glide the 360° rotating massage head across the face. Use upward strokes along the jawline, cheeks, and forehead for lifting and toning.

Step 7: Adjust Intensity: Use the gear button to cycle through 3 intensity levels. Start low and gradually increase as your skin adjusts.

Note: EMS and vibration intensity are adjusted together.

Step 8: Switch Modes:

Tap the power button to cycle through modes:

- Red Light + EMS (Anti-Aging Mode)
- Blue Light (Repair Mode)
- Purple Light + EMS (Anti-Bacterial Mode)

Step 9: Auto Shut-Off: The device automatically powers down after 12 minutes.

Step 10: Turn Off & Clean: To power off manually, hold the power button for 3 seconds. After each use, **WAIT UNTIL FULLY COOLED**, then wipe the massage head with a soft cloth, damp towel, or alcohol pad. Do not rinse under water.

Power On/Off

- **To Power On:** Press and hold the Power Button for 3 seconds.
- **To Power Off:** Press and hold the Power Button again for 3 second

Mode Adjustment

- Quickly single press the Power Button to cycle through modes
 - **Red Light + EMS** = Anti-Aging Mode
 - **Blue Light Only** = Repair & Calming Mode
 - **Purple Light + EMS** = Anti-Bacterial Clarifying Mode

Vibration Control

- **To Turn Vibration Off/On:** Quickly double-press the Power Button
- Vibration is automatically enabled when the device powers on.

Intensity (Gear) Adjustment

- **Quickly press the Gear Adjustment Key to toggle between 3 intensity levels:**
 - **Low** – Gentle stimulation
 - **Medium** – Moderate toning
 - **High** – Deep sculpting
- *Note: EMS and vibration levels adjust together and cannot be separated.*

Indicator Lights

- **EMS Indicator:** Lights up when EMS is active
- **Gear Indicator:** Shows current intensity level
- **Charging Indicator:** Pulses while charging; solid when fully charged
- **Vibration Indicator:** Lights up when vibration is active

Charging Port

- Located at the base of the device.
 - Place the device upright into the charging stand so the port connects with the built-in Type-C charger inside the stand.
 - Plug the Type-C cable into the back of the stand
 - Connect a wall adapter (*not included*) to power for fast, efficient charging.



Features Smart Beauty, Sculpted Results



The TheraSculpt is an innovative facial toning and rejuvenation device that brings the benefits of high-tech skincare directly to your fingertips. Designed to lift, brighten, and refine your complexion, this multifunctional tool offers spa-grade results from the comfort of your home.

- **360° Rotating Massage Technology:** The TheraSculpt features a forward- and reverse-rotating massage head with a 15° tilt design to glide effortlessly along the contours of your face and neck. This ergonomic movement gently lifts and firms the skin while enhancing facial circulation and lymphatic drainage. It's the perfect daily ritual for de-puffing and defining the jawline, cheeks, and eye area.
- **Red, Blue & Purple LED Light Therapy:** Equipped with three targeted LED wavelengths—red, blue, and purple—TheraSculpt offers versatile light therapy modes to support various skin goals. Each mode is optimized to complement your skincare routine and elevate your treatment experience.
- **EMS Microcurrent Stimulation:** Gentle electrical impulses help tone facial muscles and improve skin firmness over time. By mimicking the body's natural bioelectricity, EMS strengthens facial contours, improves elasticity, and supports long-term collagen production.
- **Soothing Heat Function:** The massage head warms up gently during use to improve blood flow and support deeper absorption of skincare products. This added thermal therapy enhances the effects of your serums while creating a relaxing, spa-like experience.
- **High-Frequency Vibration:** Delivering 12,000 pulses per minute, this advanced vibration feature mimics the effects of a gentle facial massage. It boosts microcirculation, relieves facial tension, and promotes smoother, more radiant skin with each session.



Light Therapy Modes and Benefits

The TheraSculpt features three light therapy modes, each designed to support your skin with specific benefits. These LED wavelengths work on a cellular level to enhance tone, clarity, and texture—bringing professional-level results to your everyday routine.

Red Light Therapy (630nm)

Anti-Aging | Firming | Radiance

- Stimulates collagen to reduce fine lines & promote firmer, more youthful-looking skin
- Enhances cell regeneration to improve texture, tone, & natural radiance
- Supports long-term skin health by boosting circulation & cellular energy

Blue Light Therapy (465nm)

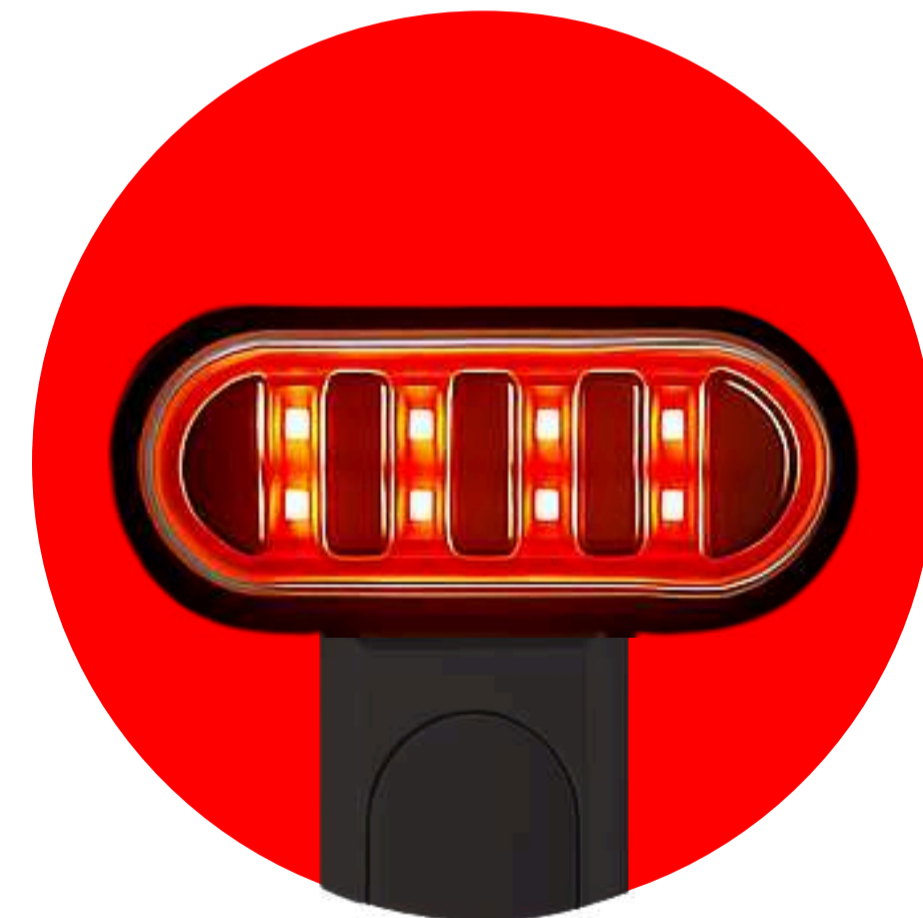
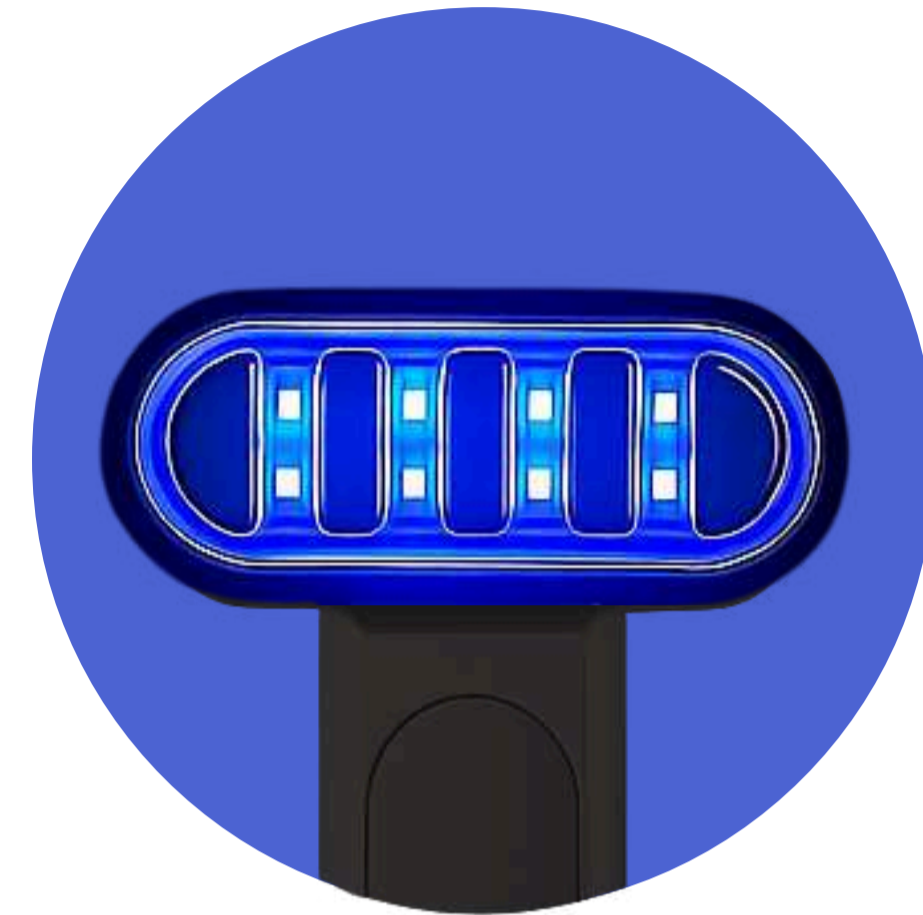
Clarifying | Calming | Balancing

- Targets blemish-causing bacteria to help prevent breakouts & reduce pore congestion
- Calms inflammation and soothes redness without drying out the skin
- Helps regulate excess oil for a more balanced and clearer complexion

Purple Light Therapy (400–420nm)

Soothing | Detoxifying | Restorative

- Combines red & blue wavelengths to purify skin & reduce environmental stressors
- Helps soothe irritation & promote recovery after flare-ups or breakouts
- Supports overall skin renewal, leaving your complexion refreshed & visibly healthier



Hints and Tips:

Regular use of your TheraSculpt

- **Before Use:**
 - Apply a hydrating serum, or gel to clean skin before treatment to enhance conductivity and glide.
 - Do not use on dry skin. Moisture is essential for EMS and light therapy to be effective and comfortable.
 - Fully charge the device before first use. Do **not** operate the TheraSculpt while it is charging.
- **During Use:**
 - Glide the massage head in gentle, upward motions to help lift and sculpt facial contours.
 - Start with **low or medium intensity** if you're new to EMS or LED technology, and increase as your skin adjusts.
- **After Use:**
 - Mild warmth or slight redness is normal and should fade within 1–2 hours.
 - If you experience discomfort or irritation, stop using the device and consult a skincare professional.
 - Wait until **FULLY COOLED**, then clean the massage head with a soft cloth, damp towel, or alcohol pad. Do not rinse or submerge in water.
- **Storage & Care:**
 - Store your TheraSculpt in a cool, dry place.
 - Avoid exposure to moisture or direct sunlight.



Important Before First Use

Follow these steps to perform a light sensitivity test:

1. Place the device on your arm and turn it on for 10 minutes.
2. Observe your skin for any redness or itching.
 - If you experience redness or itchiness, it may indicate photosensitive skin.
 - If redness lasts more than 2 hours, discontinue use.

Precautions: MUST READ



Usage Guidelines

- Start using TheraSculpt as directed in the setup guide. Ensure proper setup and adjustments for optimal comfort and performance.
- Do not use near water or in damp environments—the device is not waterproof.
- Wait until **FULLY COOLED**, then clean the massage head with a soft towel or alcohol pad after each use.
- Do not disassemble or expose to corrosive cleaners.

Who Should Avoid Using This Product

The **TheraSculpt** is not recommended for:

- Individuals with implanted electronic or metal devices (e.g., pacemakers)
- Pregnant or breastfeeding individuals
- People with epilepsy, open wounds, severe skin conditions, or known photosensitivity

Charging Guidelines

- Use only the included USB Type-C cable with a 5V power source.
- Indicator light flashes while charging; solid light means fully charged.
- If the battery icon flashes 8 times, recharge immediately.
- Device will shut off if charging begins during use. It cannot operate while charging.

Contact Us for Support

For further guidance on achieving the best results or if you encounter any issues, contact our Therasage Support Team by emailing us at support@therasage.com.

The TheraSculpt is designed with safety and wellness in mind. Follow these precautions to enjoy its full benefits and ensure long-lasting performance.

Category	TheraSculpt
Battery Capacity	350mAh (Rechargeable Lithium-Ion)
Input Voltage	5V
Charging Time	Approx. 2 hours
Product Size	145 × 19.1 × 13.6 mm
Net Weight	54g
Power	≤ 3W
Vibration Frequency	12,000 times/min
Auto Shut-Off	12 minutes
In the Box	TheraSculpt, Type-C Charging Cable, Charging Stand, User Guide

FAQs and Tips



FAQ's

Can I use TheraSculpt every day?

Yes! For best results, use 3–5 times per week, or daily if your skin tolerates it well. Consistency is key for long-term toning and rejuvenation.

What skincare products should I use with it?

Use a hydrating serum or gel before treatment. Avoid products with exfoliants, acids, or retinoids during sessions to prevent irritation.

Is it normal to not feel the EMS?

Yes—EMS sensation varies from person to person depending on skin hydration, sensitivity, and resistance. It's still working even if the sensation is subtle.

How do I clean the device?

After use, wait until the device is **FULLY COOLED**, then gently wipe the massage head with a soft towel or alcohol pad after each use. Do not rinse or submerge the device in water.



Tips

Adjust Intensity Gradually: Start on low or medium for your first few sessions, then increase as your skin adjusts.

Stay Consistent: Like exercise, results build over time. Regular use helps maintain lift, tone, and glow.

Don't Skip Hydration: Well-moisturized skin improves conductivity and enhances results with EMS and LED therapy.

Warranty

1. WHAT THIS LIMITED WARRANTY COVERS AND HOW LONG

This Product includes the product itself, and, unless specifically excluded below, all material, parts, and components related to functionality. This Limited Warranty applies only when all of these parts are genuine Therasage™ components. Cosmetic components are not covered by this Limited Warranty.

a) COVERAGE

Subject to the limitations and exclusions below, and for the duration of the applicable Warranty Period, Therasage™, and any of its affiliates, ("Seller") warrants that the Product's components will be free from material and functional non-conformities in material and workmanship under normal and reasonable consumer conditions.

b) WARRANTY PERIOD

For the one year period of this Warranty, Therasage™, at its discretion, will repair or replace any defective part, component, mechanism, or material. This warranty coverage shall include all defective parts, but shall exclude all labor charges. The Warranty Period shall commence upon purchase of the product by the end-user consumer from an authorized dealer. Each consumer is urged to register the Product through the Warranty Registration Form attached hereto. This Limited Warranty is not transferable. This Warranty can only commence once proof of purchase (or gift) is provided.

2. WHAT THIS LIMITED WARRANTY DOES NOT COVER

a) GENERALLY This Limited Warranty does not include non-conformities or damages attributable to or arising from: • Minor scratches or minor visual imperfections • Negligence; improper use, installation, finishing, maintenance operation inconsistent with Seller's recommendations and written instructions that are generally available in Seller's Product Manual as updated by bulletins or other written communications or on Seller's Worldwide website www.therasage.com • Improper storage, including inadequate shelter or inadequate venting of shipping wrap in humid locations • Misapplication of, commercial use, or use other than generally intended • Normal wear and tear • extraordinary force majeure.

b) CERTAIN CONDITIONS This Limited Warranty does not guarantee health claims. Further, this Limited Warranty does not cover damage attributable to or caused by acts of God that include, but are not limited to, power surges, stresses, fire and other conditions that exceed Product designs. Seller is not responsible for claims or damages caused by water or condensation infiltration.

3. THIS LIMITED WARRANTY'S EXCLUSIVE REMEDY

If The Product or any components fail to meet this Limited Warranty, Seller's sole obligation is to either (as Seller elects): a) repair the component (color matching not guaranteed); or b) provide replacement components to the Warranty Holder or the Seller's dealer designated (color matching not guaranteed); or c) refund the Warranty Holder's purchase price (the lesser of the original Product/ component purchase price or the original catalog list price). Repaired or replaced components are warranted only on the same terms and for the remainder of the Warranty Period. Seller reserves the right to discontinue or change any Product. If the Product or component is not available, Seller may select and provide a replacement Product or component of equal quality and price. This is the Warranty Holder 's sole and exclusive remedy for the Product under this Limited Warranty. By example but not limitation, this Limited Warranty does not cover the following costs and expenses: (i) labor; (ii)shipping/ freight expenses to return the Product to Seller, or Seller's designated service center; (iii) normal maintenance; or (iv) consequential, special, or indirect losses or damages of any kind.

4. DISCLAIMER OF WARRANTIES

THIS LIMITED WARRANTY IS IN LIEU OF AND EXCLUDES ALL OTHER WARRANTIES NOT EXPRESSLY SET FORTH HEREIN, EXPRESSED OR IMPLIED BY OPERATION OF LAW OR OTHERWISE, INCLUDING BUT NOT LIMITED TO ANY IMPLIED WARRANTIES OF MERCHANTABILITY OR FITNESS FOR A PARTICULAR PURPOSE. TO THE EXTENT THAT ANY IMPLIED WARRANTIES MAY NONETHELESS EXIST BY OPERATION OF LAW, SUCH WARRANTIES ARE LIMITED TO THE DURATION PROVIDED BY LAW. SOME STATES DO NOT ALLOW LIMITATIONS ON HOW LONG AN IMPLIED WARRANTY LASTS, SO THE ABOVE LIMITATIONS MAY NOT APPLY. SELLER DOES NOT AUTHORIZE ANYONE TO CREATE FOR IT ANY OBLIGATION OR LIABILITY IN CONNECTION WITH PRODUCTS.

5. LIMITATION OF LIABILITY

SELLER'S SOLE LIABILITY UNDER THIS LIMITED WARRANTY IS REPLACEMENT, REPAIR, OR REFUND OF THE PURCHASE PRICE AS SET FORTH ABOVE. IN NO EVENT WILL SELLER BE LIABLE FOR INCIDENTAL, CONSEQUENTIAL, INDIRECT, SPECIAL, OR PUNITIVE DAMAGES INCLUDING, BUT NOT LIMITED TO, DAMAGE OF ANY KIND TO A PREMISES, LOSS OF PRODUCT USE, LABOR, LOST PROFITS/REVENUE, INTEREST, LOST GOODWILL, WORK STOPPAGE, IMPAIRMENT OF OTHER GOODS OR WORK, INCREASED OPERATING EXPENSES, EMOTIONAL DISTRESS CLAIMS, LOSS OF CONSORT CLAIMS, OR CLAIMS OF THIRD PARTIES FOR SUCH DAMAGES, WHETHER BASED ON CONTRACT, WARRANTY, TORT (INCLUDING, BUT NOT LIMITED TO, STRICT LIABILITY OR NEGLIGENCE) OR OTHERWISE, EVEN IF ADVISED OF THE POSSIBILITY OF SUCH DAMAGES. SOME STATES DO NOT ALLOW THE EXCLUSION OR LIMITATION OF INCIDENTAL OR CONSEQUENTIAL DAMAGES, SO THE ABOVE LIMITATION OR EXCLUSION MAY NOT APPLY. THIS LIMITED WARRANTY PROVIDES SPECIFIC LEGAL RIGHTS BUT WARRANTY HOLDER MAY HAVE OTHER RIGHTS WHICH VARY FROM STATE TO STATE. IF THIS LIMITED WARRANTY IS DEEMED TO HAVE FAILED OF ITS ESSENTIAL PURPOSE, IN NO EVENT WILL SELLER'S ENTIRE LIABILITY EXCEED THE LESSER OF THE PRODUCT'S OR THE NON-CONFORMING COMPONENT'S PURCHASE PRICE.

Warranty Registration

Did you purchase from us?

If you ordered your products through the Therasage Online store, your products are *automagically* registered for warranty. We all thank you for your patronage!

Did you purchase from a third party?

If purchased from a third party, in order to maximize and benefit from our Limited Warranty, don't worry we still have you covered.

Claims

Claims must be initiated during the Warranty Period. To initiate a claim, please contact Therasage™

Attn: Customer Service
10050 Remmet Ave
Chatsworth, California 91311
or by writing technicalsupport@therasage.com.

The claimant will be required to provide proof of purchase and the date of Product purchase (unless the Product was registered at the time of purchase) and may be required to return the Product or component to the Seller (at the Claimant's expense).



Product Related Support Email: support@therasage.com

For Health Related Questions, Email: support@theraoptimalhealth.com

Phone: 888.416.4441

Website  www.therasage.com

YouTube  Therasage

Instagram  Therasageinfrared

Facebook  Therasage

TikTok  Therasage

CONTACT